

**CUSTOMER :**

**HEALING SOLUTIONS**  
**Eamon Arnett**  
**15820 N 84<sup>th</sup> st #200,**  
**Scottsdale,**  
**AZ 85260 USA**  
  
Ph. : (602) 279-8411  
eamon@healingsolutions.com

**Sample nature :** ESSENTIAL OIL  
**Botanical species :** CEDRUS DEODORA  
**Reference name :** CEDARWOOD  
**Batch number :** HSL03090  
**Origin :**  
**Part:** WOOD  
**Pyrenessences reference :** D976

**Packaging :** Brown flask of 10 ml – ambient temperature  
**Analysis :** GC Simple  
**Shelf life :** 1 year

**Comments and conclusions :**

**Batch in compliance with the standard of cedrus deodara oil**

**This sample is pure and non-adulterated**

**Validated report by :**

**Daniel DANTIN**

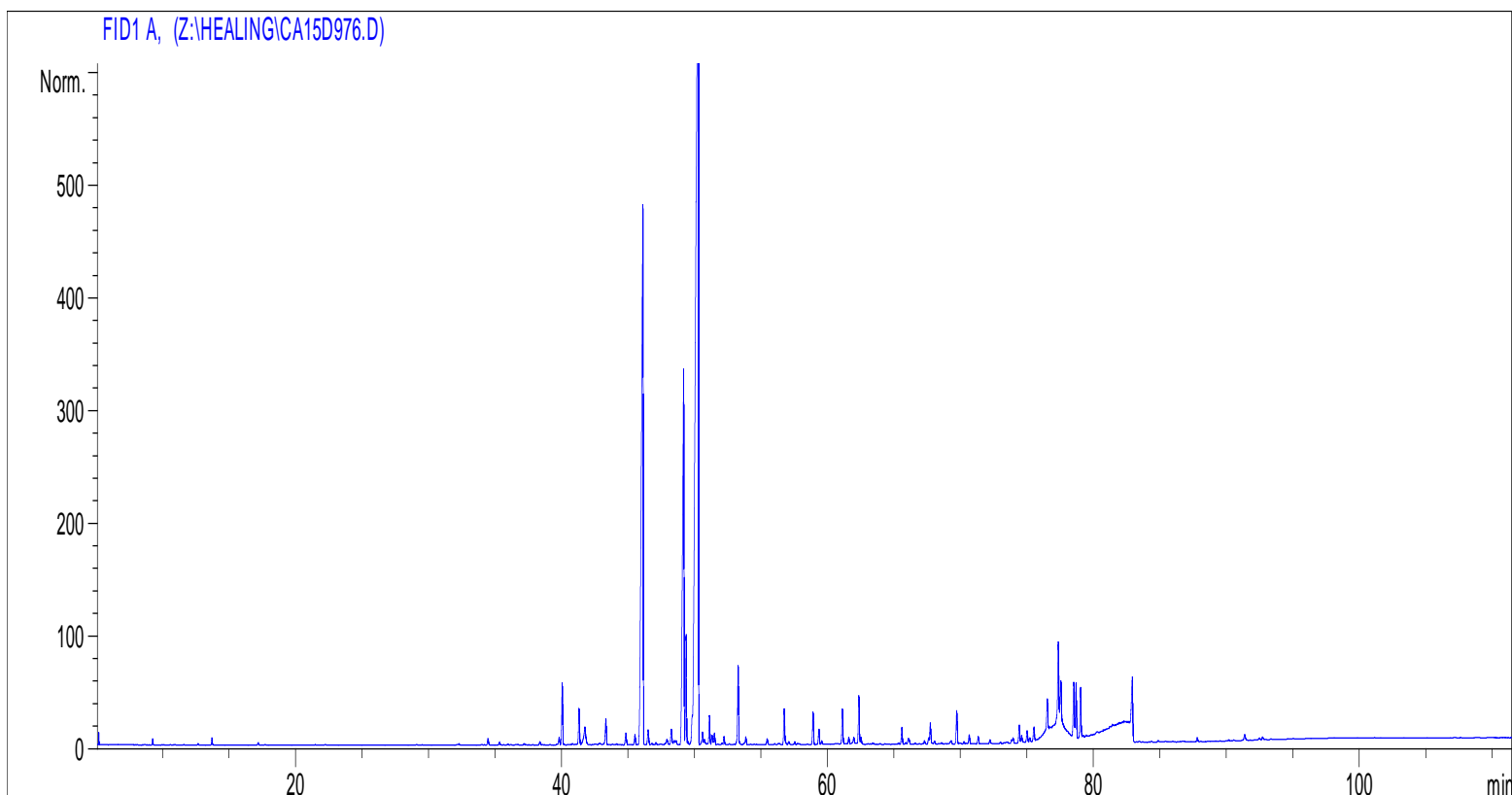


**GAS CHROMATOGRAPHY** norm NF ISO 11024

**Analysis conditions :**

CPG 6890 / MS 5973 – Column : VF WAX polar 60 m × 0,25 mm × 0,5 µm  
 CPG 6890 FID - Column : VF WAX polar 60 m × 0,25 mm × 0,5 µm  
 Temperature program : 6 mn to 70 °C -2 °C/mn→250 °C - 10mn to 250 °C  
 Carrier gas He : 23 psis/MS – 30 psis/FID  
 Sample injection / split : 1 µl of 10 % solution in hexane,  
 Mass range : 30 to 350, Oil components are identified by a combination of retention times  
 (our own database) and mass spectra library NKS 75 000 records,  
 Percentages are calculated from GC/FID peaks areas without using corrections factors,

**Chromatographic profile (GC/FID)**



**Identification results : CEDARWOOD BATCH N° HSL03090**

TR (min)	Constituants	%	TR (min)	Constituants	%
40,1	1-METHYL-4-ACETYLCYCLOHEX-1-ENE	0,95	41,3	LONGIFOLENE	0,61
46,1	<b>α-HIMACHALENE</b>	<b>15,34</b>	49,2	<b>γ-HIMACHALENE</b>	<b>8,96</b>
49,4	α-CEDRENE	1,68	50,3	<b>β-HIMACHALENE</b>	<b>37,07</b>
53,3	α-BISABOLENE	1,29	56,7	SESQUITERPENE Mw=202	0,62
58,9	OCTAHYDRO METHYLPHENANTHRENE	0,52	61,1	OCTAHYDRO METHYLPHENANTHRENE	0,58
62,4	CYCLOTERPENIC ESTER Mw=178	0,75	69,7	PHENOLIC COMPONENT Mw=220	0,58
76,5	TUMERONE	0,55	77,4	ATLANTOL	1,44
77,4	<b>α-ATLANTONE</b>	<b>6,48</b>	78,5	β-ATLANTONE	1,11
78,7	ATLANTONE ISOMER	1,02	79,0	SESQUITERPENOL	1,04
82,9	<b>γ-ATLANTONE</b>	<b>9,53</b>		<b>TOTAL</b>	<b>90,12</b>