

# Healing Solutions Clary Sage

This GC-MS analysis confirms the chemical distribution for this pure clary sage matches that expected for the botanical name *Salvia sclarea*. All the constituents are within range and no synthetics or adulterants were found.



**SPECTRIX LABS**  
GC/MS Analysis for  
Fragrances & Flavors

Information from Data File:

File: C:\HPCHEM1\DATA\_F-ZH-S019.D

Operator: SPECTRIX LABS, INC.

Method File: CFLAZ

Sample Name: CLARY SAGE

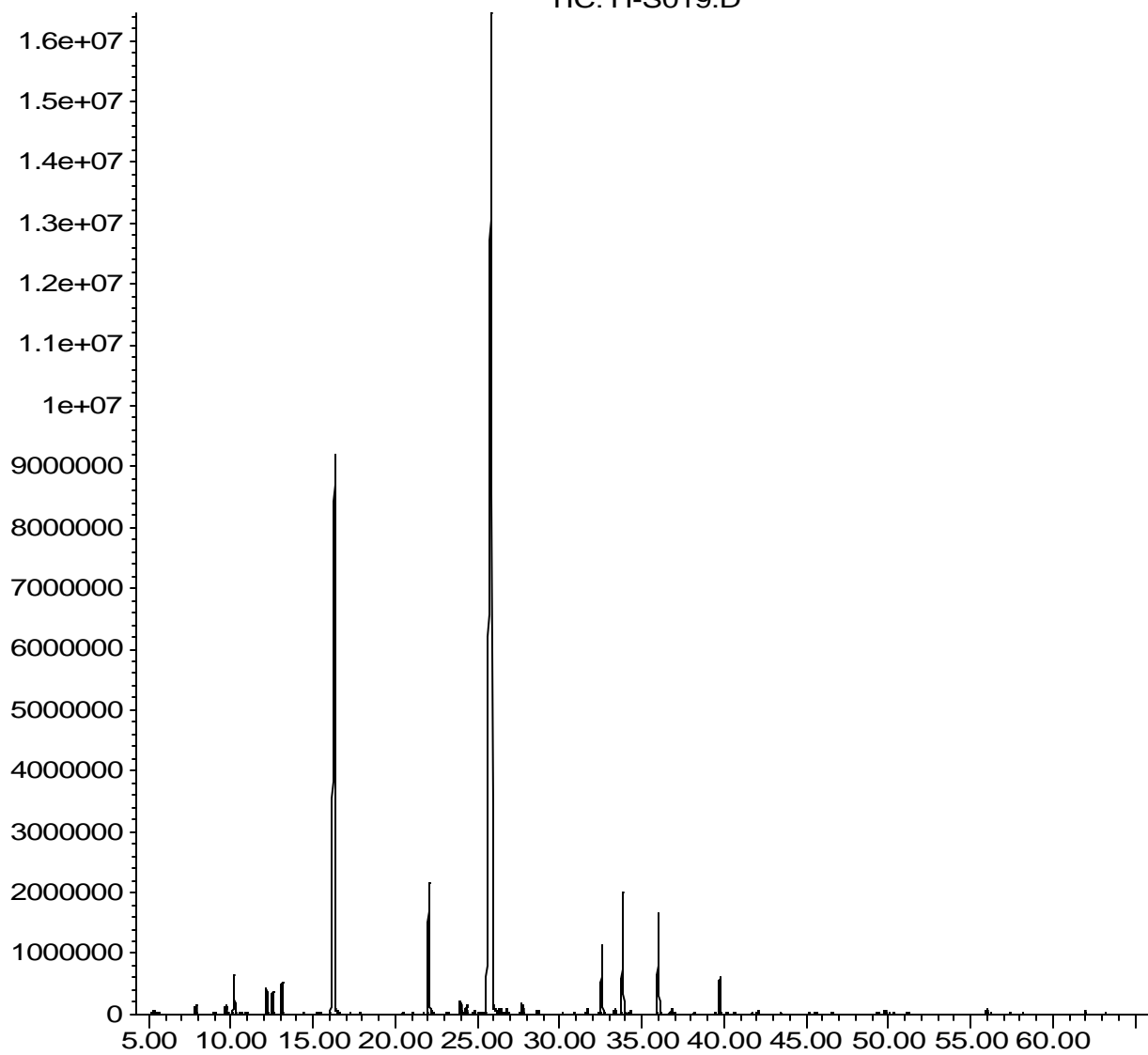
Misc Info: PRIMIMUM

Pk#	R/T	Area%	I.D.	CAS#
1	5.30	0.12	HEXENOL<3E->	000928-97-2
2	7.84	0.24	PINENE<ALPHA->	000080-56-8
3	9.68	0.24	PINENE<BETA->	000127-91-3
4	10.19	0.98	MYRCENE	000123-35-3
5	10.54	0.05	OCTANOL<3->	000589-98-0
6	12.17	0.65	LIMONENE	000138-86-3
7	12.54	0.56	OCIMENE<(Z)-BETA->	027400-71-1
8	13.10	0.76	OCIMENE<(E)-BETA->	027400-72-2
9	15.26	0.04	TERPINOLENE	000586-62-9
10	15.38	0.07	LINALOOL OXIDE<TRANS->	034995-77-2
11	16.31	22.82	LINALOOL	000078-70-6
12	16.51	0.06	NONANAL	000124-19-6
13	17.85	0.04	OCIMENE<ALLO->	007216-56-0
14	22.04	3.87	TERPINEOL<ALPHA->	000098-55-5
15	22.21	0.08	METHYL CHAVICOL	000140-67-0
16	23.94	0.45	GERANIOL	000106-24-1
17	24.80	0.07	NERAL	000106-26-3
18	25.85	58.50	LINALYL ACETATE	000115-95-7
19	26.73	0.11	GERANIAL	000141-27-5
20	27.71	0.28	BORNYL ACETATE	000076-49-3
21	28.65	0.09	CARVACROL	000499-75-2
22	31.66	0.12	TERPINYL ACETATE<ALPHA->	000080-26-2
23	32.57	1.72	NERYL ACETATE	000141-12-8
24	33.35	0.10	COPAENE<ALPHA->	003856-25-5
25	33.84	3.15	GERANYL ACETATE	000105-87-3
26	34.27	0.10	ELEMENE<BETA->	000515-13-9
27	36.01	2.80	CARYOPHYLLENE<E->	000087-44-5
28	36.80	0.13	COUMARIN	000091-64-5
29	38.18	0.04	HUMULENE<ALPHA->	006753-98-6
30	39.74	0.95	GERMACRENE D	023986-74-5
31	40.60	0.04	BICYCLOGERMACRENE	024703-35-3
32	42.04	0.06	CADINENE<DELTA->	000483-76-1
33	45.55	0.04	CARYOPHYLLENE OXIDE	001139-30-6
34	49.32	0.06	EUDESMOL<BETA->	000473-15-4
35	49.79	0.07	BULNESOL	022451-73-6
36	55.98	0.05	TRANS-A/B-SCLARELOXIDE	005153-92-4
37	61.98	0.04	SCLAREOL	000515-03-7

99.55 % ANALYZED

Abundance

TIC: H-S019.D



Time-->