

CUSTOMER :

HEALING SOLUTIONS
www.healingsolutions.com

Sample nature : ESSENTIAL OIL
Botanical species : BOSWELLIA SERRATA
Reference name : FRANKINCENSE
Batch number : HSL70200
Origin :
Part:
Pyrenessences reference : D979

Packaging : Brown flask of 10 ml – ambient
Analysis : temperature GC Simple
Shelf life : 1 year

Comments and conclusions :

**This batch of Frankincense is a boswellia serrata from India :
% of α -thuyene important, presence of Estragole.**

This sample is pure and non-adulterated

Validated report by :

Daniel DANTIN

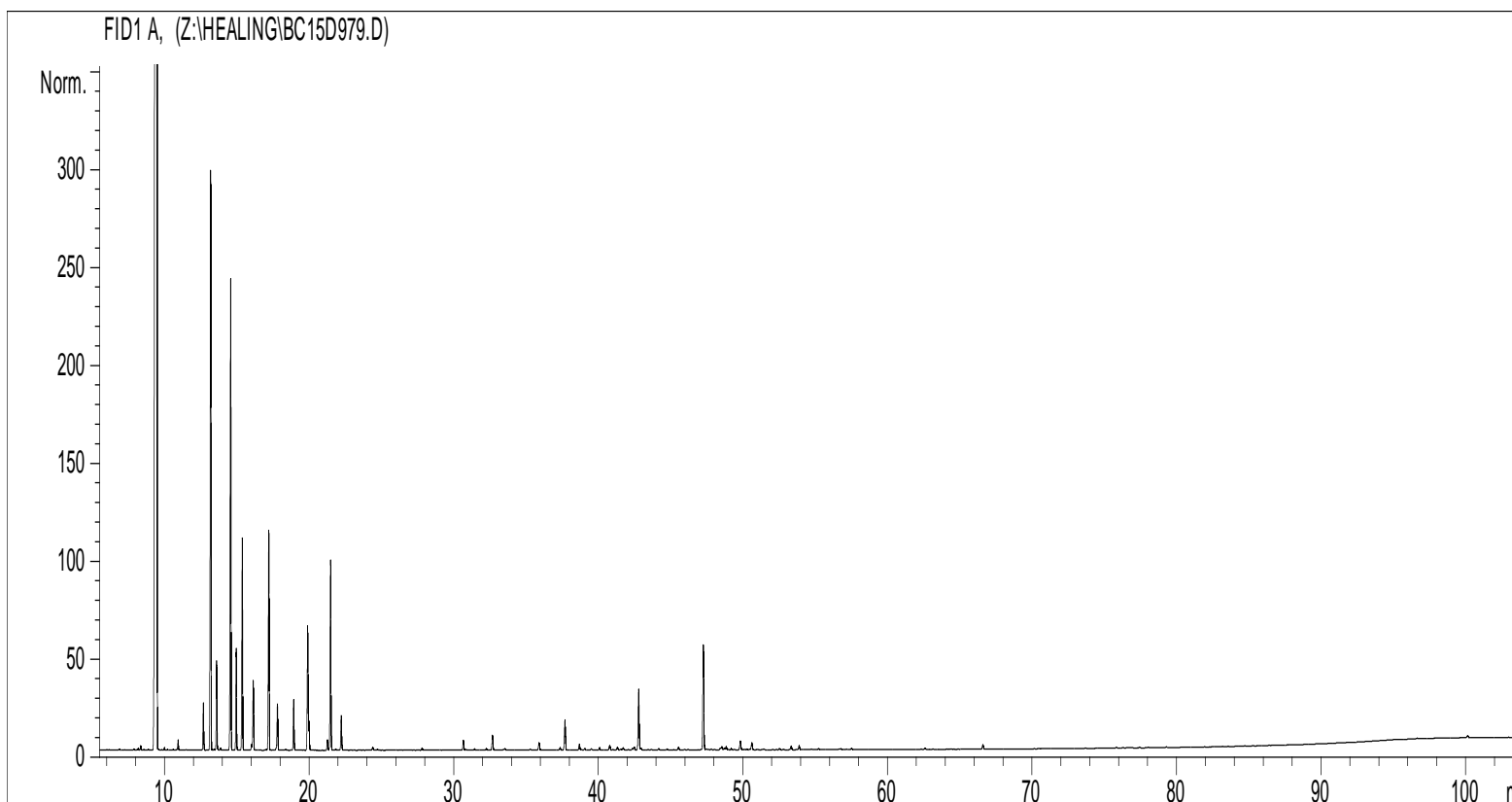


GAS CHROMATOGRAPHY norm NF ISO 11024

Analysis conditions :

CPG 6890 / MS 5973 – Column : VF WAX polar 60 m × 0,25 mm × 0,5 µm
 CPG 6890 FID - Column : VF WAX polar 60 m × 0,25 mm × 0,5 µm
 Temperature program : 6 mn to 70 °C -2 °C/mn→250 °C - 10mn to 250 °C
 Carrier gas He : 23 psis/MS – 30 psis/FID
 Sample injection / split : 1 µl of 10 % solution in hexane,
 Mass range : 30 to 350, Oil components are identified by a combination of retention times
 (our own database) and mass spectra library NKS 75 000 records,
 Percentages are calculated from GC/FID peaks areas without using corrections factors,

Chromatographic profile (GC/FID)



Identification results : FRANKINCENSE BATCH N° HSL70200

TR (min)	Constituants	%	TR (min)	Constituants	%
9,2	α-PINENE	0,68	9,5	α-THUYENE	78,46
12,7	β-PINENE	0,35	13,2	SABINENE	4,35
13,6	PINADIENE	0,64	14,6	Δ3-CARENE	3,65
14,9	β-MYRCENE	0,73	15,4	α-PHELLANDRENE	1,57
16,1	α-TERPINENE	0,53	17,2	LIMONENE	1,76
19,9	γ-TERPINENE	1,02	21,5	p-CYMENE	1,59
22,2	TERPINOLENE	0,29	37,7	β-BOURBONENE	0,30
42,8	TERPINENE-4-OL	0,61	47,3	ESTRAGOLE	1,04
100,1	INCENSOL ACETATE	0,03		TOTAL	97,00