

# Healing Solutions Frankincense

This GC-MS analysis confirms the chemical distribution for this pure frankincense matches that expected for the botanical name *boswellia serrata*. All the constituents are within range and no synthetics or adulterants were found.



**SPECTRIX LABS**  
GC/MS Analysis for  
Fragrances & Flavors

Information from Data File:

File: C:\HPCHEM\1\DATA\_F-ZH-S003.D

Operator: SPECTRIX LABS, INC.

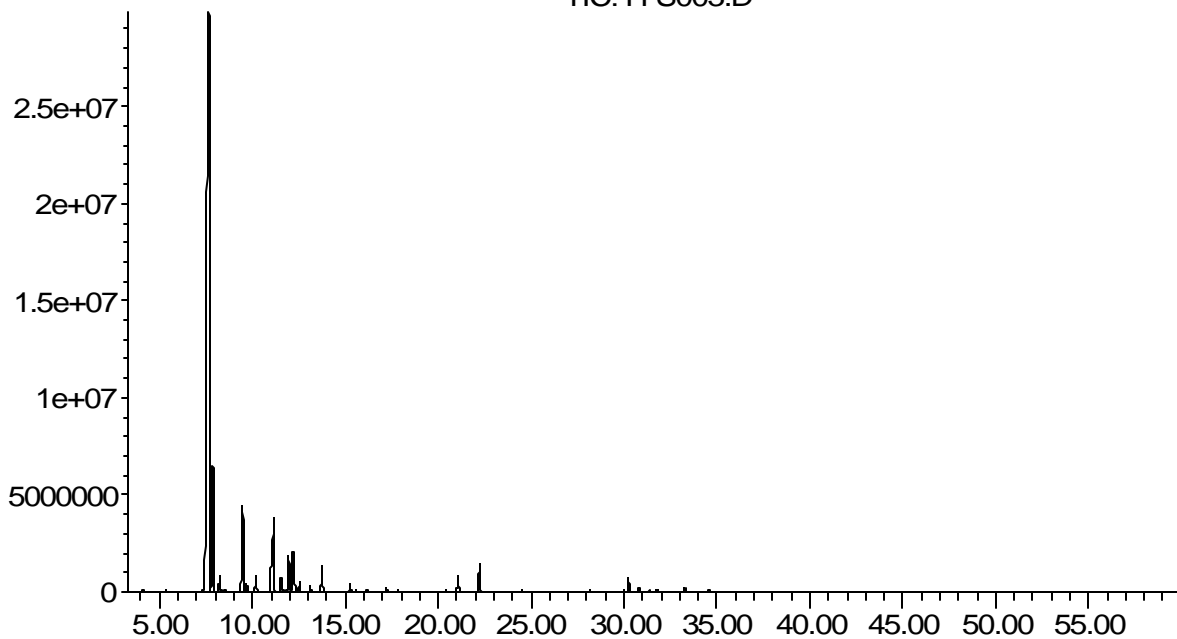
Sample Name: FRANKINCENSE boswellia serrata

Company: Healing Solutions

Pk#	R/T	Area%	I.D.	CAS#
1	7.65	64.61	THUJENE<ALPHA->	002867-05-2
2	7.87	7.08	PINENE<ALPHA->	000080-56-8
3	8.25	0.95	THUJA-2,4(10)-DIENE	036262-09-6
4	8.52	0.10	CAMPHENE	000079-92-5
5	9.47	5.72	SABINENE	003387-41-5
6	9.69	0.47	PINENE<BETA->	000127-91-3
7	10.19	0.98	MYRCENE	000123-35-3
8	11.04	2.43	Phellandrene <alpha->	000099-83-2
9	11.14	4.51	Carene <delta-3->	013466-78-9
10	11.55	0.85	TERPINENE<ALPHA->	000099-86-5
11	11.68	0.12	CYMENE<ORTHO->	000527-84-4
12	11.95	2.26	CYMENE<PARA->	000099-87-6
13	12.19	2.40	LIMONENE	000138-86-3
14	12.19	0.50	Phellandrene <beta->	000555-10-2
15	12.55	0.51	OCIMENE<(Z)-BETA->	027400-71-1
16	13.11	0.29	OCIMENE<(E)-BETA->	027400-72-2
17	13.74	1.52	TERPINENE<GAMMA->	000099-85-4
18	15.26	0.42	TERPINOLENE	000586-62-9
19	16.16	0.09	LINALOOL	000078-70-6
20	17.20	0.22	THUJONE<CIS->	000546-80-5
21	17.59	0.03	MENTH-2-EN-1-OL<CIS-PARA->	029803-82-5
22	17.86	0.06	OCIMENE<ALLO->	007216-56-0
23	18.50	0.04	SABINOL<TRANS->	029606-76-6
24	20.38	0.04	SABINOL <CIS->	003310-02-9
25	21.07	0.97	TERPINEN-4-OL	000562-74-3
26	22.02	0.04	TERPINEOL<ALPHA->	000098-55-5
27	22.23	1.63	METHYL CHAVICOL	000140-67-0
28	29.00	0.02	ELEMENE<DELTA->	020307-84-0
29	29.98	0.06	COPAENE<ALPHA->	003856-25-5
30	30.25	0.48	BOURBONENE<BETA->	005208-59-3
31	30.34	0.03	BOURBONENE ISOMER NOT FOUND	
32	30.81	0.12	METHYL EUGENOL	000093-15-2
33	31.36	0.04	COPAENE<BETA->	018252-44-3
34	31.72	0.03	COPAENE<BETA-> ISOMER NOT FOUND	
35	31.82	0.03	BERGAMOTENE<ALPHA-TRANS->	013474-59-4
36	32.16	0.02	AMORPHENE<GAMMA->	006980-46-7
37	33.25	0.11	CADINENE<GAMMA->	039029-41-9
38	33.30	0.10	BISABOLENE<BETA->	000495-61-4
39	34.58	0.07	KESSANE	003321-66-2
40	40.87	0.02	NOT FOUND	
		99.97	% total analyzed	

Abundance

TIC: H-S003.D



Time-->