

CUSTOMER :

HEALING SOLUTIONS
www.healingsolutions.com

Sample nature : ESSENTIAL OIL
Botanical species : LAVANDULA ANGUSTIFOLIA
Reference name : LAVENDER
Batch number : HSL035610
Origin :
Part: FLOWERING PLANT
Pyrenessences reference : D981

Packaging : Brown flask of 10 ml – ambient temperature
Analysis : GC Simple
Shelf life : 1 year

Comments and conclusions :

**BATCH IN COMPLIANCE WITH THE NORM OF LAVENDER
"OTHER ORIGINS" ESSENTIAL OIL NF ISO 3515 : 2004**

This sample is pure and non-adulterated

Validated report by :

Daniel DANTIN

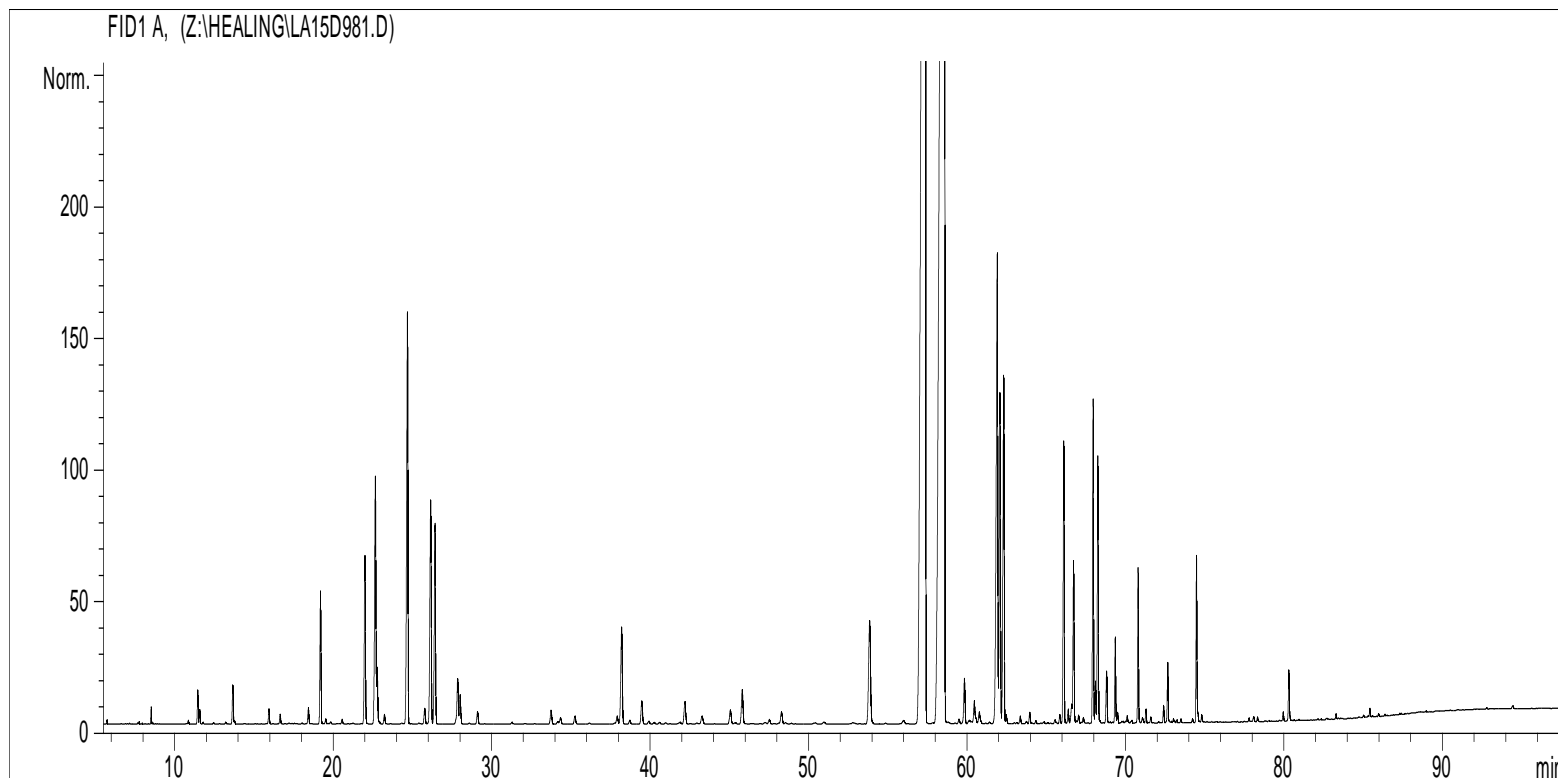


GAS CHROMATOGRAPHY norm NF ISO 11024

Analysis conditions :

CPG 6890 / MS 5973 – Column : VF WAX polar 60 m × 0,25 mm × 0,5 µm
 CPG 6890 FID - Column : VF WAX polar 60 m × 0,25 mm × 0,5 µm
 Temperature program : 6 min to 60°C – 2°C/min→80 °C – 1°C/min→120°C – 4°C/min→250°C – 10 min à 250°C
 Carrier gas He : 23 psis/MS – 30 psis/FID
 Sample injection / split : 1 µl of 10 % solution in hexane,
 Mass range : 30 to 350, Oil components are identified by a combination of retention times (our own database) and mass spectra library NKS 75 000 records
 Percentages are calculated from GC/FID peaks areas without using corrections factors,

Chromatographic profile (GC/FID)



Identification results : LAVENDER BATCH N° HSL035610

TR (min)	Constituants	%	Norm (%)	TR (min)	Constituants	%	Norm (%)
19,2	β-MYRCENE	0,67		22,0	LIMONENE	0,96	< 1
22,7	1,8-CINEOLE	1,58	< 3	22,8	β-PHELLANDRENE	0,28	< 1
24,7	Cis-β-OCIMENE	2,56	1 - 10	26,1	Trans-β-OCIMENE	1,51	0,5 - 6
26,4	3-OCTANONE	1,19	< 3	38,2	OCT-1-EN-3-YL ACETATE	0,72	
53,8	CAMPHRE	0,97	< 1,5	57,4	LINALOOL	32,34	20 - 43
58,6	LINALYL ACETATE	36,83	25 - 47	61,9	β-CARYOPHYLLENE	3,60	
62,1	TERPINENE-4-OL	2,04	< 8	62,3	LAVANDULYL ACETATE	2,15	< 8
66,1	E-β-FARNESENE	1,43		66,7	LAVANDULOL	0,84	< 3
68,0	α-TERPINEOL	1,54	< 2	68,3	BORNEOL	1,36	
68,8	GERMACRENE D	0,27		69,4	NERYL ACETATE	0,39	
70,8	GERANYL ACETATE	0,66		72,7	NEROL	0,27	
74,5	GERANIOL	0,72		80,3	CARYOPHYLLENE OXIDE	0,28	
					TOTAL	95,16	