

# Healing Solutions Lemon

This GC-MS analysis confirms the chemical distribution for this pure lemon matches that expected for the botanical name Citrus limon. All the constituents are within range and no synthetics or adulterants were found.



**SPECTRIX LABS**  
GC/MS Analysis for  
Fragrances & Flavors

Information from Data File:

File: C:\HPCHEM\1\DATA\_F-Z\H-S005.D  
 Operator: SPECTRIX LABS, INC.  
 Method File: EVB2EO  
 Sample Name: LEMON

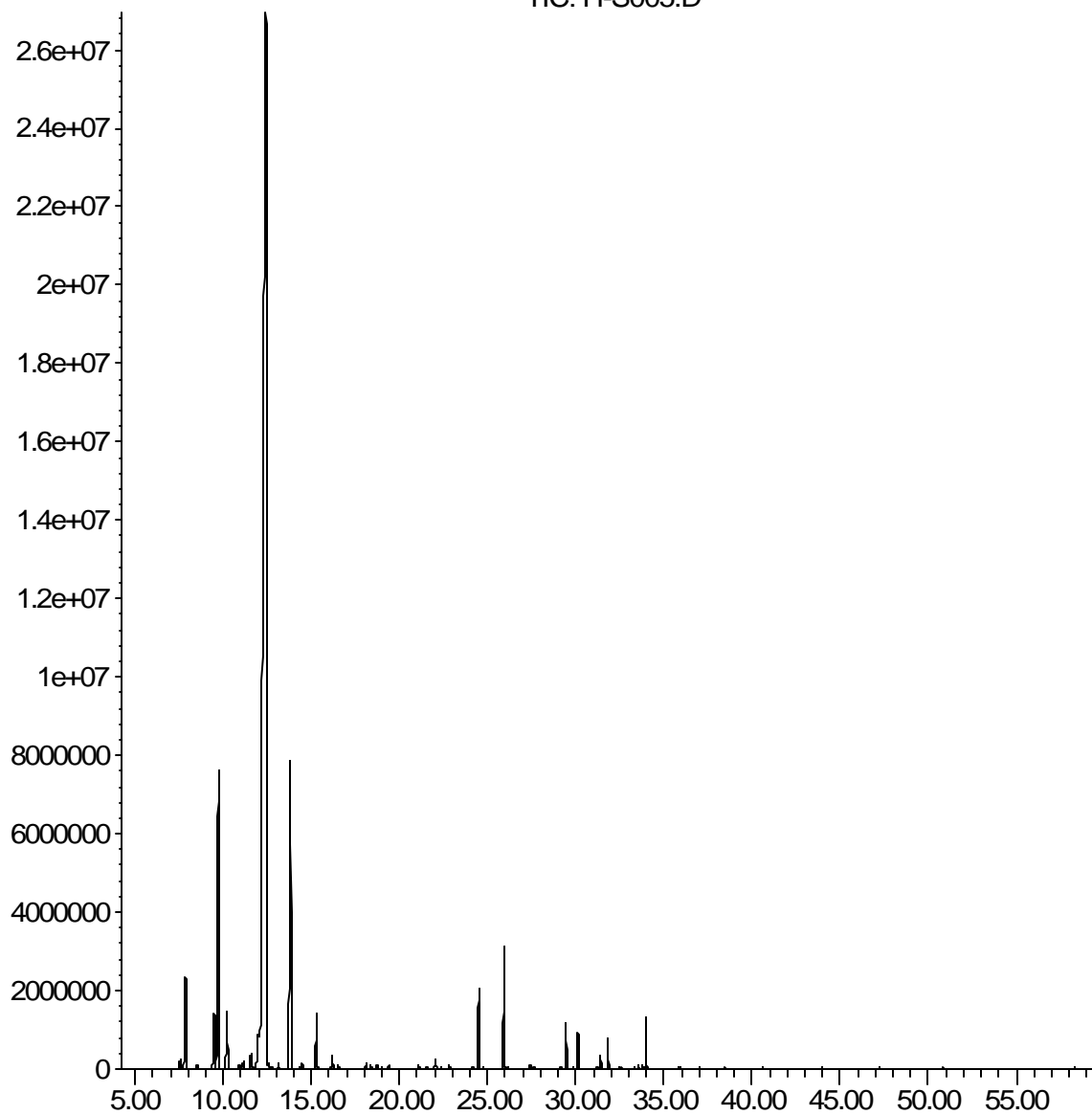
For: Healing Solutions

Pk#	R/T	%Area	I.D.	CAS#
1	7.57	0.28	THUJENE<ALPHA->	002867-05-2
2	7.86	2.94	PINENE<ALPHA->	000080-56-8
3	8.52	0.10	CAMPHENE	000079-92-5
4	9.49	1.81	SABINENE	003387-41-5
5	9.73	9.47	PINENE<BETA->	000127-91-3
6	10.21	1.61	MYRCENE	000123-35-3
7	10.91	0.10	OCTANAL<N->	000124-13-0
8	11.14	0.24	.DELTA.-3-CARENE	013466-78-9
9	11.59	0.54	CARENE<DELTA-2->	000554-61-0
10	12.03	1.61	CYMENE<PARA->	000099-87-6
11	12.41	63.40	LIMONENE	000138-86-3
12	13.13	0.10	OCIMENE<(E)-BETA->	027400-72-2
13	13.81	8.22	TERPINENE<GAMMA->	000099-85-4
14	14.48	0.13	MENTHA-3,8-DIENE<PARA->	000586-67-4
15	15.29	1.30	TERPINOLENE	000586-62-9
16	16.18	0.31	LINALOOL	000078-70-6
17	16.51	0.08	NONANAL	000124-19-6
18	18.11	0.13	LIMONENE OXIDE<CIS->	013837-75-7
19	18.37	0.08	LIMONENE OXIDE<TRANS->	004959-35-7
20	18.73	0.09	Epoxyterpinolene	
21	19.40	0.08	CITRONELLAL	000106-23-0
22	21.08	0.08	TERPINEN-4-OL	000562-74-3
23	22.03	0.25	TERPINEOL<ALPHA->	000098-55-5
24	22.83	0.06	DECANAL	000112-31-2
25	24.50	1.71	NERAL	000106-26-3
26	25.93	2.50	GERANIAL	000141-27-5
27	27.40	0.09	ASCARIDOLE<ISO->	
28	29.15	0.04	CITRONELLYL ACETATE	000150-84-5
29	29.46	0.67	NERYL ACETATE	000141-12-8
30	30.13	0.50	GERANYL ACETATE	000105-87-3
31	31.41	0.22	CARYOPHYLLENE<E->	000087-44-5
32	31.84	0.43	BERGAMOTENE<ALPHA-TRANS->	013474-59-4
33	32.60	0.06	SANTALENE<BETA->	000511-59-1
34	33.57	0.05	VALENCENE	004630-07-3
35	33.80	0.04	BISABOLENE<(Z)-ALPHA->	070332-15-9
36	33.99	0.68	BISABOLENE<BETA->	000495-61-4

100.00% detected peaks over 0.03% were analyzed.

Abundance

TIC: H-S005.D



Time-->